

FACULDADE DE LETRAS
INSTITUTO DE ARQUEOLOGIA

CONIMBRIGA

VOLUME XV



UNIVERSIDADE DE COIMBRA

1976

A THIN WALLED WARE BEAKER FROM LISBON

I would like to present a thin walled ware beaker of form Mayet XLII from the Museu Nacional de Arqueologia e Etnologia at Belém í¹). Its form, a one handled beaker with continuous restricted foot and everted lip, is quite ordinary, like many published by Mayet in her work on the thin walled wares of the Iberian peninsula (2). What sets it apart is its decoration. Mayet states that the only possible decoration for this type of vase is pine scales in barbotine (3). The Lisbon beaker, however, shows a garland of leaves, while Moevs published several such beakers from Cosa with incision (4). The nr. 236, 374, and 449 (5) are represented by fragments too small to identify the corresponding form without hesitation or doubt. But there is enough preserved of nr. 372 and 373 (6) to establish beyond doubt that we are dealing here with two vases of Mayet form XLII or Moevs form XLVI, and that both carry a decoration of fine or rouletted incision. There is another vase of this form in the Museo Arqueológico Nacional (*)

(*) I am grateful to Dr. J. M. Bairrão Oleiro, director of the Belém museum, for his kind permission to examine, draw, and publish this vase.

(2) F. MAYET, *Les Céramiques à Parois Fines dans la Péninsule Ibérique*, Paris, 1975, p. 95-98.

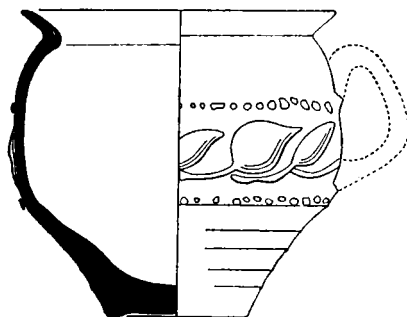
(3) *Ibid.*, p. 95.

(4) M. T. MARABINI MOEVS, *The Roman Thin Walled Pottery from Cosa*, Memoirs of the American Academy in Rome, vol. XXXII, Rome, 1973, form XLVI.

(5) *Ibid.*, p. 146, 284, pi. 24, 69; p. 193, 300, pi. 40, 81; p. 250, 308, pi. 48, 87 respectively.

(6) *Ibid.*, p. 193, 300, pi. 40, 81.

in Madrid (without inventory number) with two deep bands of fine incision, one above and the other below the carena. The vase was found in the Cerro de Minguillar, Cordoba, and is made of a refined, ocre (Munsell 10 YR 7/4) fabric and covered with a heavy orange (Munsell 5 YR 6/6 to 5/6) engobe (7).



SCALE 1:2

Lisbon 14535.

Provenance: Algarve.

Form: Mayet XLII; Moevs XLVI.

Nearly complete, handle missing.

Dimensions: diam. border 82 mm., diam. foot 38 mm., height 78 mm.

Decoration in barbotine: garland of stemmed, upturned leaves with horizontal rows of dots above and below the decorative zone, cf. Mayet nr. 458, Bémont décor B 251 (8).

Fabric: quite coarse with many inclusions on the surface, yellow ocre (Munsell 7.5 YR 6.5/6) in colour.

(7) Unfortunately I was unable to ascertain whether this vase has been published or not. My sincere thanks are due to Dr. Luis Caballero Zoreda, curator of the department of classical archaeology, for allowing me to examine this beaker and the many other thin walled ware vases I was able to study in Madrid, and not least for the help and time he afforded me.

(8) MAYET, *op. cit.*, pi. LV; C. Bémont, Vases à Parois Fines de Glanum: Formes et Décors, in *Gallia*, Tome 34, fasc. 1, pi. 10.

Engobe: very burnt and worn, mat, brownish orange (Munsell 5YR 5/6 to 6/6) on the base, with small spots of yellow brown (Munsell 7.5 YR 4/4) in the recessed areas of the barbotine.

Possibly of the same production as the following vases from the Mayet catalogue: nr. 413, 424, 493, 494, and 579 ⁽⁹⁾.

The chronology is hard to define; the form is found from early Claudius at Cosa ⁽¹⁰⁾, while the decorative motive continued during the reign of the Flavians ⁽ⁿ⁾. I would propose a Claudian through early Flavian date for the Lisbon beaker.

JEANNETTE U. SMIT NOLEN

⁽⁹⁾ MAYET, *op. cit.*, p. 88, 90, 97-98, 107, pi. L, LI, LX, LXIX.

⁽¹⁰⁾ MOEVS, *op. cit.*, p. 193.

⁽ⁿ⁾ BÉMONT, *op. cit.*, p. 276.