



STABAT MATER

A TRES VOCES,

Dois Supranos, Baxo, com duas Violetas e Violoncelo

Composto

POR JOZE JOAQUIM DOS SANTOS

*Mestre da Muzica do Real Seminario
da Santa Igreja Patriarcal e Compozitor da mesma
Aberto e Estampado por Fran.^{co} D. Milcent
Mestre da Real Fabrica da Empreçao de Muzica*

1792.

LISBOA.

Preço 2400.r^s*Vendese na Real Fabrica de Muzica
a São Pedro de Alcantara*

*Pr^a
Violetas*

p: f: p: f: p: f: p: f: p: f: p: f: p:

Seg.^a

p: f: p: f: p: p: Lig:

*Pr.^o
Supranos*

Adagio

Seg.^o

Adagio

Baxo

Violoncello

p: f: p: f: p: p: Lig:

Handwritten musical score for a vocal piece, likely a setting of the 'Stabat Mater'. The score consists of seven staves. The top two staves are for piano accompaniment, featuring intricate sixteenth-note passages. The middle three staves are for vocal lines, with lyrics written in cursive below the notes. The bottom staff is for piano accompaniment, mirroring the top two staves. Dynamics such as *f*, *p*, *sf*, and *fp* are indicated throughout. The lyrics are: "Sta...bat Mater dolo...ro...sa Sta...bat do lo", "Sta...bat Mater do...lo...ro sa do...lo", and "Sta bat Ma ter do".

f *p* *sf* *fp* *f* *p* *f* *p*

f *p* *sf* *fp* *f* *p* *f* *p*

Sta...bat Mater dolo...ro...sa Sta...bat do lo

Sta...bat Mater do...lo...ro sa do...lo

Sta bat Ma ter do

f *p* *sf* *fp* *f* *p* *f* *p*

Rinf: *p:* *f:* *p:* *f:* *p:*
Rinf: *p:* *f:* *p:* *f:* *p:*
f: *p:*
f: *p:*
Rinf: *p:* *f:* *f:* *p:*

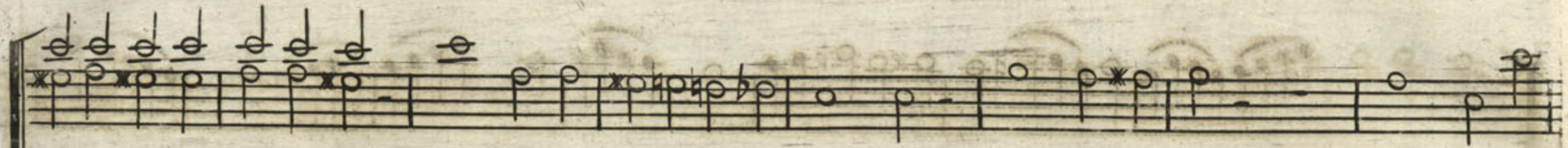
ro *sa* *JuxtaCrucemlacrij mo*..... *sa* *Juxta Cru*....
ro *sa* *JuxtaCrucemlacrymosa* *Lacrij*... *mosa* *JuxtaCrucem*
lo... *ro*... *sa* *Juxta Crucemlacrymosa* *JuxtaCrucem*
Rinf: *p:* *f:* *f:* *p:*

Handwritten musical score for a vocal piece, likely a setting of the 'Stabat Mater'. The score consists of five staves. The top two staves are for piano accompaniment, featuring intricate sixteenth-note patterns and dynamic markings such as *p: f: p:*, *f: p:*, *f:*, *p:*, *f: p:*, *f:*, and *p:*. The third staff is a vocal line with the lyrics: *us sta..bat Mater dolo..rosa do.....*. The fourth staff is another vocal line with the lyrics: *us Sta bat Mater do...lo...ro...sa Sta....*. The fifth staff is a vocal line with the lyrics: *us Sta...bat Ma....* and includes a *Lig:* marking. The bottom staff is piano accompaniment with dynamic markings *p:*, *f:*, *p:*, *Lig:*, and *f: p:*. The manuscript shows signs of age, including some staining and a small mark in the top right corner.

Handwritten musical score for a vocal piece, likely a Mass setting, featuring seven staves. The score includes two piano accompaniment lines and a vocal line with lyrics. The lyrics are: "lo...ro...sa Lacrymosa Juxta Crucem lacrymosa Juxta... bat do lo...ro...sa Juxta Crucem Juxta Crucem lacrymo...sa Juxta ter do...lo...ro...sa Juxta Crucem lacrymosa Juxta". The score is marked with various dynamics: *f*, *p*, *Rinf*, *sf*, *Ligp*, and *Ligp*. The notation includes treble clefs, a key signature of one flat, and various rhythmic values such as eighth and sixteenth notes, rests, and slurs. The paper shows signs of age, including some staining and wear.

A handwritten musical score on aged paper, page 62. The score consists of six staves of music. The notation includes various note values (quarter, eighth, and sixteenth notes), rests, and accidentals (sharps, flats, and naturals). Some notes are marked with an 'x' or a star. The music is organized into measures by vertical bar lines. Below the staves, there are four lines of lyrics in a cursive hand, which appear to be "men a men a" repeated in different groupings. The lyrics are: "men a men a", "men a men a", "men a men a", and "a men a men a". The paper shows signs of age, including some staining and discoloration.

The image shows a page of handwritten musical notation on aged paper. It consists of seven staves. The top two staves contain musical notation with various note values, rests, and slurs. The third staff contains the lyrics "a men a men a men a men a men a". The fourth staff contains musical notation. The fifth staff contains the lyrics ". men a men a men a men a". The sixth staff contains musical notation. The seventh staff contains the lyrics ". men a men a men a men a men a men a". The notation includes various note values, rests, and slurs, and the lyrics are written in a cursive hand.



men amen amen amen amen a men a men amen a



men amen amen amen amen a men amen a



men amen amen amen amen a men



men a men a men a men a men a

men a men a men a men a men a

a men a men a men a men a men a

Handwritten musical notation on a five-line staff. It begins with a treble clef and a key signature of one flat (B-flat). The music starts with a piano (*p.*) dynamic and a half note, followed by a series of eighth notes. A forte (*f.*) dynamic is marked at the beginning of a sixteenth-note triplet. The staff concludes with a double bar line and repeat dots.

Handwritten musical notation on a five-line staff, identical in notation to the first staff. It begins with a piano (*p.*) dynamic and a half note, followed by a series of eighth notes. A forte (*f.*) dynamic is marked at the beginning of a sixteenth-note triplet. The staff concludes with a double bar line and repeat dots.

Handwritten musical notation on a five-line staff, identical in notation to the first two staves. It begins with a piano (*p.*) dynamic and a half note, followed by a series of eighth notes. A forte (*f.*) dynamic is marked at the beginning of a sixteenth-note triplet. The staff concludes with a double bar line and repeat dots.

men Amen Amen Amen Amen Amen Amen.

Handwritten musical notation on a five-line staff, identical in notation to the previous staves. It begins with a piano (*p.*) dynamic and a half note, followed by a series of eighth notes. A forte (*f.*) dynamic is marked at the beginning of a sixteenth-note triplet. The staff concludes with a double bar line and repeat dots.

men Amen Amen Amen Amen Amen Amen.

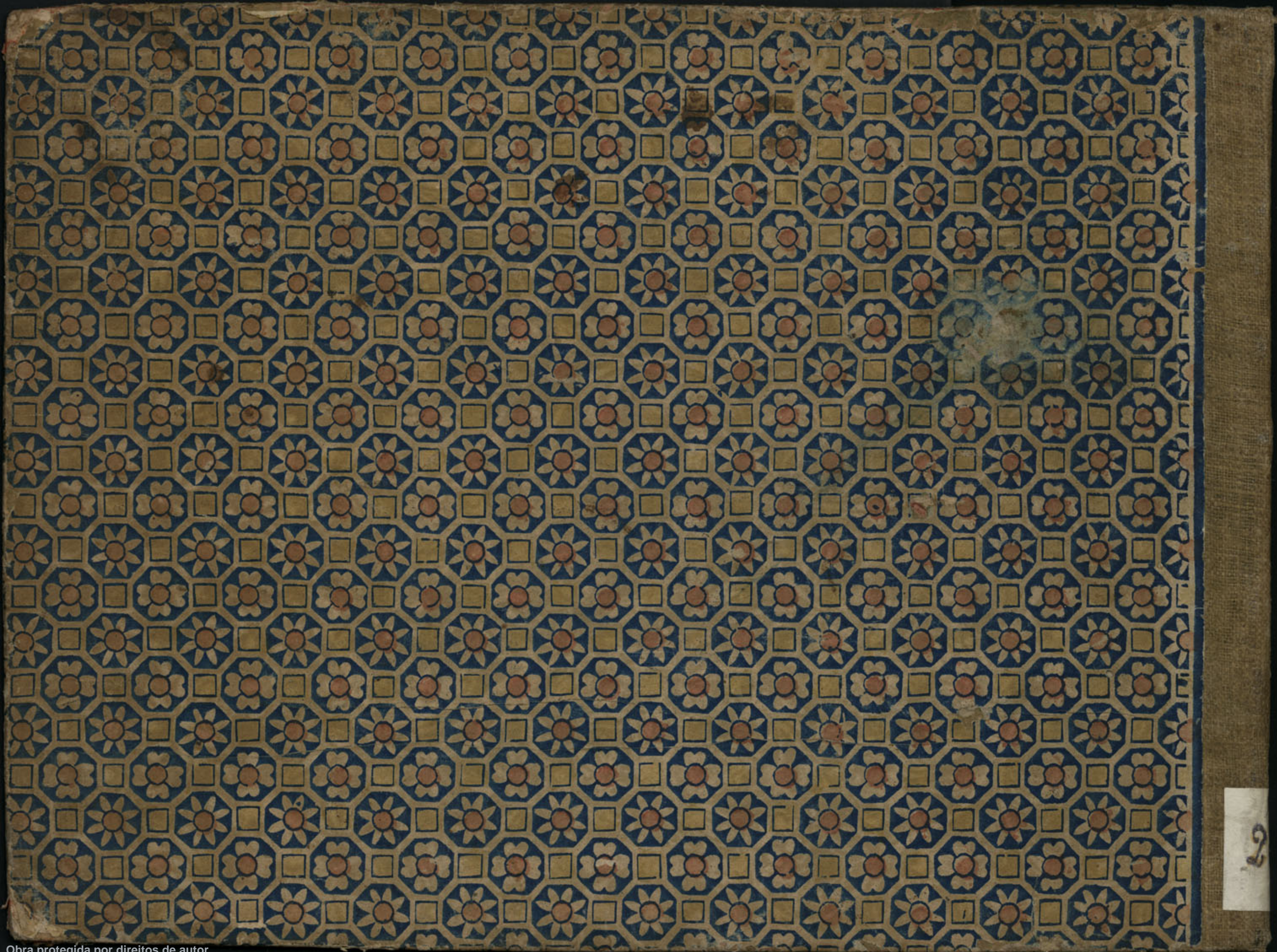
Handwritten musical notation on a five-line staff, identical in notation to the previous staves. It begins with a piano (*p.*) dynamic and a half note, followed by a series of eighth notes. A forte (*f.*) dynamic is marked at the beginning of a sixteenth-note triplet. The staff concludes with a double bar line and repeat dots.

men Amen Amen Amen Amen Amen Amen

Handwritten musical notation on a five-line staff, identical in notation to the previous staves. It begins with a piano (*p.*) dynamic and a half note, followed by a series of eighth notes. A forte (*f.*) dynamic is marked at the beginning of a sixteenth-note triplet. The staff concludes with a double bar line and repeat dots.

Finiz





22