



European University Institute

doctoral grants &
postdoctoral fellowships
in
florence

2007-2008

the european university *par excellence*

**doctoral grants
deadline: 31 January 2007**

**post-doctoral fellowships
deadline: 25 October 2006**

**Fernand Braudel Fellowships
Deadline: 30 September 2006 and 30 March 2007**

Quotes from researchers and alumni

‘There is no place in Europe or elsewhere where the doctoral experience is more transformative or the intellectual outlook more advanced than in Florence at the European University Institute.’

‘The best place in the world to fall in love..’

Professor Joseph H.H. WEILER (LAW 1978)

Director Hauser Global Law School Program, NYU School of Law

‘The EUI is a great place for doing research. There is a constant stream of challenging seminars and talks by guest professors. New ideas float around all the time. The close interaction with fellow researchers who are tackling problems and questions similar to your own can be very stimulating.’

Stefaan DE RYNCK (SPS 1993)

European Commission Spokesman Transport Policy

‘At the IUE I wrote a Phd I could hardly have written in Spain, thanks to the working conditions and the support of professors, other researchers and staff.

A nice memory of the time spent in Florence. My time in Florence is full of nice memories, and I am afraid I can’t be too academic here. The beauty of the place and the outstanding people I met are probably top. Bar Fiasco spontaneous parties and the food come next.’

Eva ANDUIZA PEREA (SPS 1993)

Associate Professor of Political Science, Autonomous University of Barcelona

European University Institute
Academic Service
Via dei Roccettini, 9
I-50016 San Domenico di Fiesole (FI),
tel. (39) 055 4685 373; fax 055 4685 444

<http://www.iue.it>
applyres@iue.it

Introduction

The European University Institute was created by the Member States of the European Communities and started its activities in 1976. Today, thirty years later, it has one of the largest doctoral and post-doctoral programmes in the social sciences in the world. Its alumni hold academic posts all over Europe and occupy leading professional positions internationally.

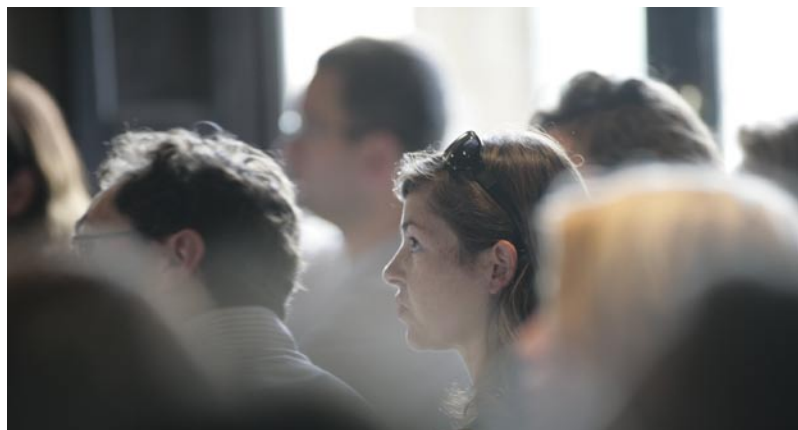
Excellence in teaching and research

The high quality of the research and teaching programmes can be attributed to the Institute's recruitment of the finest scholars from Europe and abroad. The extensive visitors' programmes attract leading academics and policy-makers to Florence to participate in numerous conferences, symposia and workshops, open to all members of the Institute. For research fellows these provide excellent opportunities to have access to the international network in their discipline.

A truly European and international university

Over thirty years' experience in running the doctoral programme has resulted in a unique, structured approach with the objective of completing an internationally recognised thesis in four years. More than 800 professors, postdoc fellows and doctoral research students recruited from more than 30 nations work together in beautiful historical buildings on the hills between Florence and Fiesole, offering a unique multi-cultural and comparative environment. 'A province of the mind', as the former President Patrick Masterson likes to call it.

The EUI's strong European character is reflected in a research student population originating from all the Member States. About 20% of the researchers come from outside the European Union, countries including the Americas, Australasia, the Middle East and Turkey.



A highly successful doctoral/ postgraduate programme

The success of the doctoral programme is best illustrated by the following indications. The overall completion rate has now reached 80% across the disciplines. The time-to-degree has dropped to below 4 years median across disciplines.

The quality of the Institute doctorate is best reflected by EUI new doctors' success in the job market. An increasing amount of EUI researchers – from 50% to over 70% –, finds employment in the academic sector (up to 81% in social and political sciences).

Furthermore the Institute's alumni find excellent employment opportunities in international organizations such as the European Central Bank, European Investment Bank, Organization of Economic Co-operation and Development, World Bank and International Monetary Fund, as well as in various domains of national and international public service and the private sector.

A unique place in Europe for post-doctoral studies

There are not many places in Europe that provide post-doctoral training facilities. At the European University Institute, young postdocs can find alternatives to the programmes available in the United States. Two different options are available:

1. The Jean Monnet Fellowship Programme at the Robert Schuman Centre for Advanced Studies (RSCAS) with its emphasis on research is available to junior academics at an early stage of their careers. See page 32.

2. The Max Weber Fellowship Programme, started in 2006, for junior postdocs who would like to embark on an academic career and improve their teaching and professional skills. See page 34.

A stimulating place for short periods of research

EUI Fernand Braudel Senior Fellowships

These fellowships, for a duration of 3 to 10 months, are available for established academics who want to participate in the Institute's activities. Fellows will carry out their research in one of the Institute's four departments.

For more details and deadlines see page 35.



Deadlines for applications

Doctoral Grants deadline: 31 January 2007

Post-doctoral Fellowships deadline: 25 October 2006

Fernand Braudel Fellowships deadline: 30 September 2006 and 30 March 2007

Economics Department

The Economics Department is committed to research, the provision of teaching at the highest international level for doctoral students and the generation of a flow of applied research on topics of European concern. In the 2005-06 academic year a re-structured doctoral programme with more emphasis upon coursework in the first year of the programme has been introduced.

The teaching in the doctoral programme is based upon formal coursework in the areas of microeconomics, macroeconomics and econometrics, conducted at a level needed for the students to pursue successful academic careers in leading universities or to make the best use of professional non-academic opportunities in international organisations such as the International Monetary Fund, World Bank, European Commission and Central Banks. Alumni have been placed successfully both in such institutions and in top universities. The faculty also provides guidance in research methods and advises students on the preparation of their dissertation. The department's placement office supplies information about the job market process and assistance in preparing a cv and 'job market' paper, which are made available for reference on the department's website.

Basic and advanced graduate courses in microeconomics, macroeconomics and econometrics are taken by students during their first year. In addition the department, together with visiting professors from top universities, offers a wide range of advanced and specialised graduate courses to first and second year students. Furthermore, weekly research seminars in macroeconomics, microeconomics, econometrics and economic policy are given by visiting speakers. Students have a supervisor and a second advisor chosen from amongst the faculty. By efficient and regular supervision, students

are expected to complete their thesis within four years, during the course of which they are funded by their home countries and by the Institute. Full details of the programme are available from the web site <http://www.iue.it/ECO/>.

The research undertaken in the Department depends on the interests of the current staff but covers a wide variety of topics, some of which are summarised below.

Microeconomic theory and policy

Specific research areas are game theory, bounded rationality, and learning; applied microeconomics and, in particular, industrial organisation, contract theory, personnel economics, regulation and competition policy; price discrimination and economic analysis of law.

Macroeconomics and economic policy

Research topics pursued in this general area include: international transmission and economic interdependence; business cycle theory and evidence; technological progress and the determinants of economic growth; international macroeconomics; optimal monetary and fiscal policy in closed and open economy; European Union economic integration issues; public finance; economics of the welfare state and labour economics.

Econometrics

Research interests include: semi-parametric estimation and causality assessment in microeconomic data sets; time series methods for macroeconomic data modelling and forecasting, with emphasis on cointegration, structural breaks, panel data methods for integrated series. The research carried out in these areas includes both theoretical and applied studies.

Faculty with university of origin and research interests

Anindya Banerjee (Oxford University) [until Dec. 2007] – the econometrics of panel data, structural breaks and forecasting.

Giancarlo Corsetti (Università di Roma III) – international macroeconomic interdependence; currency and financial crises; stabilization policies; European economic integration.

Pascal Courty (London Business School) – contract theory with applications to the design of incentives in organisations and to firm pricing policies.

Luigi Guiso (Università di Roma Tor Vergata) – finance and growth, households savings and financial decisions, firms' investment and adjustment policies, the transmission of monetary policy, culture and economic performance.

Omar Licandro (FEDEA, Madrid) – growth theory, (embodied) technical progress and vintage (human and physical) capital, and some related empirical topics such as the measurement of quality improvements in durable goods, the investment behaviour of plants and the evaluation of car scrappage schemes.

Helmut Lütkepohl (Humboldt Universität zu Berlin) – methodological issues related to the study of nonstationary, integrated time series and the analysis of the transmission mechanism of monetary policy in the Euro area.

Ramon Marimon (Universitat Pompeu Fabra, Barcelona) – macroeconomics, monetary theory, labor theory, contract theory, learning theory, economics of innovation, science and technology policy and political economy.

Massimo Motta (Universitat Pompeu Fabra, Barcelona) – industrial organisation and competition policy; international trade, trade policy and multinational firms.

Salvador Ortigueira (Cornell University) – macroeconomics, including economic growth, fiscal policy and labor markets.

Morten Ravn (London Business School) – empirical and theoretical issues in international macroeconomics, business cycle theory and measurement, and monetary theory and policy.

Karl Schlag (Universität Bonn) [until Aug. 2007] – evolutionary economics, bounded rationality, game theory, industrial organization and economic theory. Current research focuses on understanding decision-making under regret and how this affects price-setting behaviour and willingness to imitate.

Richard Spady (Oxford University) – theoretical and applied microeconometrics, particularly semiparametric and nonparametric methods, and applications in political science, finance, and industrial organization.

Rick van der Ploeg (Universiteit Amsterdam) – macroeconomics and public finance, with a special interest in the economics of the welfare state. He also has an interest in the economics of culture.

For a full overview of activities please consult the departmental web pages: <http://www.iue.it/ECO/>.



Anindya Banerjee



Giancarlo Corsetti



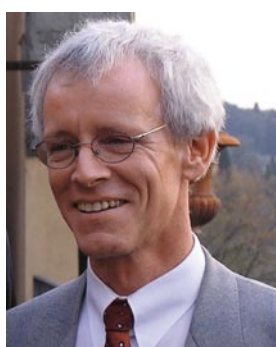
Pascal Courty



Luigi Guiso



Omar Licandro



Helmut Lütkepohl



Ramon Marimon



Massimo Motta



Salvador Ortigueira



Morten Ravn



Karl Schlag



Richard Spady



Rick van der Ploeg

Department of History and Civilization

The Department of History and Civilization focuses primarily on the history of Europe from the Middle Ages to the present day.

European history is studied from a rich variety of perspectives, employing a wide range of research methodologies. The department encourages a close engagement with the social sciences, and actively promotes the development of comparative history and transnational history. The faculty comprises twelve full-time professors, whose different national and international backgrounds and specialisations enrich the department's analytical approaches and perspectives. At the same time the department is committed to certain common objectives, to surmount national perspectives on history, to place national historiographies in a distinct European perspective, to integrate them in a broader methodological and thematic context, and to relate historical research to contemporary concerns.

In its research and teaching the department focuses on two principal themes:

1. Empire, nation and region. The re-examination of space as an analytical category of historical research has encouraged interest in a variety of European constellations, conflicts, identities.

a) The formation and dissolution of Empires is at the heart of much research carried out by Diogo Ramada Curto, Bartolomé Yun Casalilla and Arfon Rees, which offers new perspectives for the study of recent and current developments. The emergence of the nation states and the regions in Europe constitutes another axis of research, both in modern Europe as dealt with by Tony Molho, Martin van Gelderen, Antonella Romano, Bartolomé Yun Casalilla, Giulia Calvi, and in contemporary Europe in the work of Bo Stråth, Giovanni Federico,

Gerhard Haupt and Arfon Rees. The relations between different spaces, the frontiers that separate and align them, and the transfers between them are analysed by Giovanni Federico, Antonella Romano, Pascaline Winand and Diogo Ramada Curto. The study of European integration is a central theme, and is enriched by approaching it from this broad historical perspective which Pascaline Winand examines.

b) The political violence associated with the establishment and destruction of Empires and nation states is treated by Gerhard Haupt and Arfon Rees, while the conflictual relations between colonies and metropolises are at the centre of the interest of Diogo Ramada Curto. Wars and social eruptions are analysed by Tony Molho.

c) These shifting historic spaces are also the place of formation of different identities and different ranks. The topic of transnational identities features in the research of Tony Molho, Bartolomé Yun Casalilla, Diogo Ramada Curto, Martin van Gelderen, Pascaline Winand and Bo Stråth; nationalism is studied by Bartolomé Yun Casalilla, Gerhard Haupt and Bo Stråth. Among other fields of interest Pascaline Winand works on the history of international relations; Giovanni Federico on economic history; Tony Molho, Giulia Calvi, Martin van Gelderen, Arfon Rees, Bo Stråth and Gerhard Haupt work on political and cultural history, while Diogo Ramada Curto, Tony Molho, Bartolomé Yun Casalilla, Giovanni Federico and Antonella Romano focus on colonial and transnational history.

2. The study of ideas, discourses and memories. The department contributes strongly to the on-going historiographical and theoretical debates concerning the relationship of cultural history and social history, the status of narrative history, and the study of memory.

Martin Van Gelderen is developing a new intellectual history of early modern Europe, Arfon Rees and Bo Stråth do so for modern and contemporary Europe. The discourses, their force fields and effects are analysed for modern science by Antonella Romano, for gender by Giulia Calvi, for modernity by Bo Stråth.

Alongside these themes, the department is a laboratory for innovative research and methodology, which fosters a plurality of perspectives from which various periods and problems are studied, such as class, gender, religion, race. Bartolomé Yun Casalilla, Tony Molho, Diogo Ramada Curto, Bo Stråth, Giovanni Federico and Gerhard Haupt are interested in the study of social actors, practices, and constellations. Pascaline Winand is interested in international developments and Giovanni Federico in economic processes. Giulia Calvi's and Antonella Romano's work focuses on the analysis of sexual roles and divisions in the historical construction of experiences; on the practices of negotiation between juridical traditions and local cultures; and on the transmission of values and the memory of families and individuals between generations. Religion as a combination of theology, belief and ritual, and as a social and political factor is present in the work of Martin van Gelderen, Tony Molho, Gerhard Haupt and Bartolomé Yun Casalilla. Ethnic divisions and groupings are studied by Diogo Ramada Curto, Tony Molho and Arfon Rees.

The doctorate in History

The Department of History and Civilization offers a structured four-year doctoral programme. The first year comprises the study of historiographical issues and the in-depth exploration of selected central themes of European history. Professors direct more specialized research seminars, tailored to the needs of research students. The Department also provides training in research skills, a range of language courses, training in IC&T and multimedia skills.

Researchers have the possibility to undertake funded research missions, to work in archives and libraries. In the second, third and fourth years, researchers pursue their individual research, and are invited to present the results of their work in seminars and workshops. Researchers may also receive support to present their work-in-progress at international conferences.



Faculty with country of origin and research interests

Giulia Calvi (Università degli Studi di Siena) – gender history; women and the family; gender and politics; identity and otherness.

Diogo Ramada Curto (Universidade de Lisboa) – European imperialism and colonialism from the 15th to the 20th centuries; Portuguese empire.

Giovanni Federico (Università di Pisa) – economic history of Europe; world agricultural growth; integration of the world market in the 19th and 20th century.

Heinz-Gerhard Haupt (Universität Bielefeld) – European societies in the 19th and 20th centuries; nationalism and religion; political violence.

Harold James (Princeton University) – Marie-Curie Chair; families and the corporation in European capitalism

Anthony Molho (Brown University) – the state in late medieval and early modern Italy; Renaissance society; European images and identities.

Arfon Rees (University of Birmingham) – Russia, the former Soviet Union and Eastern Europe; Communism and its legacy.

Antonella Romano (CNRS Paris) – early modern science; science and religion; science and empire.

Bo Stråth (Göteborgs Universitet) [until June 2007] – European modernity, European culture, European political economy, European public sphere.

Martin van Gelderen (University of Sussex) – intellectual history and the history of political thought; natural law theories and republican traditions in Europe.

Pascaline Winand (Université Libre de Bruxelles) – European integration, international history, transatlantic relations; European Community/European Union.

Bartolomé Yun Casalilla (Universidad de Sevilla) – Mediterranean and Atlantic societies between 1492 and 1914; transnational and comparative history.

For a full overview of activities please consult the departmental web pages:

<http://www.iue.it/HEC/>



Giulia Calvi



Diogo Ramada Curto



Giovanni Federico



Heinz-Gerhard Haupt



Harold James



Anthony Molho



Arfon Rees



Antonella Romano



Bo Stråth



Martin van Gelderen



Pascaline Winand



Bartolomé Yun Casalilla



Department of Law

The Department of Law is committed to study law in a comparative and contextual manner, and with special focus on European and international law. Hence this formula: the Department is European and international in its character, comparative in its approach and contextual in its methods.

European and international character

The issues of European legal institutions and the development of a body of European law feature prominently in professors' research projects and in thesis topics. 'Europeanisation' designates an additional feature of increasing importance. Europe is not just represented through a distinct body of law. Legal issues in areas such as labour, economic-, private- or administrative law are reflecting the mutual interdependence of (formerly) national legal systems and the emergence of transnational structures of governance. The Department has established a European Private Law Forum in order to complement the work being done in EU Law. Naturally, professors and researchers in the Department take great interest in the study of the proposed constitutional treaty of the European Union, the effect of enlargement on the constitutional evolution of the EU and of the acceding states, the protection of fundamental rights and the development of constitutional values in the law of the EU, and the impact of new modes of governance on EU law.

International law is a strong element in the Department's programme with a long-standing experience in human-rights protection; the study of competition law and international trade, the developments in international criminal law and the impact of globalisation on legal systems are increasingly attracting attention. In addition, the Department of Law is interested in the impact of biotechnology on human rights, and also in international and European environmental law and the law of cultural heritage.

Comparative approach

Researchers and professors coming from many different countries build a large corpus of expertise on national legal systems. This feature facilitates comparative work, which is encouraged by the organisation of the teaching programme. Comparatists today cannot treat different legal systems as if they existed in a territorially delimited world. Europeanisation has transformed the objects of comparative research. Outside the EU globalisation processes have led to a restructuring of interdependencies. The Department's strong points are in the fields of constitutional, administrative, labour, social and environmental law, civil and commercial law, and the law of new technologies.

Legal theory and Law in context

Law is not treated in a purely technical fashion, but is placed in its social, cultural, political and economic context. Such approaches and disciplines as philosophy of law, legal theory, economic analysis of law, gender studies, organisation theory, political science, and legal sociology all occupy important positions. Major efforts have been undertaken to overcome the schisms between legal theory and legal research.

The Department aims at combining the insights of legal traditions stemming as well from Roman law as from common law. The focus in legal theory is on the structures of moral argument as directed towards evaluation and critical approaches to law, in particular with respect to controversial issues.

Faculty with country of origin and research interests

Giuliano Amato (Senate of the Italian Republic) – Competition law; comparative constitutional law; law of the European Union

Fabrizio Cafaggi (Università degli Studi di Trento) – Comparative private law; law and economics

Marise Cremona (Queen Mary College, London) – Institutional law of the European Union; external relations of the EU; foreign and security policy; European internal market

Bruno de Witte (Universiteit Maastricht) – Institutional law of the European Union; legal regulation of culture, media, education and language

Pierre-Marie Dupuy (Université de Paris 2) – Public international law; international economic law, protection of the international environment, international adjudication; general theory of law

Francesco Francioni (Università degli Studi di Siena) – International human rights, international environmental law, cultural heritage law

Christian Joerges (Universität Bremen) [until Sept. 2007] – European economic and private law, private international law

Marie-Ange Moreau (Université de Aix-Marseille III) – International and comparative labour law and social law

Ernst-Ulrich Petersmann (Université de Genève) – International law, especially international economic law, environmental law and human rights law

Wojciech Sadurski (University of Sydney) – Philosophy of law; constitutional theory and comparative constitutionalism

Giovanni Sartor (Università degli Studi di Bologna) – Marie-Curie Chair: Legal informatic and legal theory

Heike Schweitzer (Universität Hamburg) – Competition law; international and European economic law

Neil Walker (University of Aberdeen) – European law, especially institutional and constitutional dimensions and Third Pillar (i.e. justice and home affairs) matters; constitutional theory; policing

Jacques Ziller (Université de Paris I) – Comparative public law, European law, especially EU institutional law, EU law of public sector activities; administrative science, public administration and public management

For a full overview of activities please consult the departmental web pages: <http://www.iue.it/LAW/>.



Giuliano Amato



Fabrizio Cafaggi



Marise Cremona



Bruno de Witte



Pierre-Marie Dupuy



Francesco Francioni



Christian Joerges



Marie-Ange Moreau



Ernst-Ulrich Petersmann



Wojciech Sadurski



Giovanni Sartor



Heike Schweitzer



Neil Walker



Jacques Ziller

Department of Political and Social Sciences

The Department of Political and Social Sciences is one of Europe's leading centres for research in comparative politics, sociology, international relations and social and political theory. In a recent survey of research output in political science it was ranked first in Europe and fifth in the world. There is a common emphasis on social and political change within Europe at all levels, the national, the subnational and the transnational. Much of the research focuses on Europeanization understood in a very broad sense including, but not confined to, the European Union. The Department favours a multi-faceted approach to research projects and theses, many of which cut across the conventional boundaries. The Department also encourages broader cross-disciplinary work. It has good working relations in both teaching and research with the departments of Law, History and Economics, and is at the centre of extensive international networks. It hosts a number of large, collaborative projects financed by the European Commission Framework programmes or other external sources. At the same time, there are many individual stand-alone projects resulting in single-authored books and articles.

The department currently has eighteen full-time professors, from all parts of Europe, whose interests range across a number of themes.

Social change in Europe and its implications for society, politics and public policy is a central area of study. One of the critical challenges is that of demographic change and societal aging, linked to the transformation of the family and life courses in the work of Martin Kohli and Jaap Dronkers. Another concerns patterns of social stratification and inequality covered by Jaap Dronkers and Martin Kohli as well as unemployment in the work of Donatella della Porta. Migration, its causes, patterns and

implications has become a key issue for the future of Europe, with impacts on a number of other policy fields dealt with by Jaap Dronkers and Martin Kohli.

Shifting patterns of public authority in Europe are producing an important **transformation of government**, as power is moved upwards downwards and outwards. Adrienne Héritier is director of a large transnational research project on new modes of governance and institutional change at state and European level (NEWGOV). European integration features in the work of a number of professors. László Bruszt works on transitions including changes in government and markets and democratization in both western and east-central Europe. Michael Keating works on urban and regional government in the context of spatial rescaling and European integration and on nationalism and national self-determination, while Alexander Trechsel covers federalism. The comparative study of political institutions, including executives and legislatures is a well-established field of study, and incorporates the work of Peter Mair, Stefano Bartolini (the new Director of the Robert Schuman Centre for Advanced Studies), Sven Steinmo and of the new Stein Rokkan Chair, soon to be appointed.

The department has a longstanding interest in the comparative study of **public policy** at European, national and subnational levels. This includes social policy and welfare states in the work of Sven Steinmo, education policy covered by Jaap Dronkers and urban and regional policies in the work of Michael Keating, as well as defence and security policy dealt with by Pascal Venneson. Rikard Stankiewicz (joint professor with the Robert Schuman Centre for Advanced Studies) directs a programme on the governance of science and technology.

An important strand of research concerns **political and**

social mobilization. Peter Mair works on elections and party systems in a comparative context. Donatella della Porta's interests cover social movements including national and transnational movements and the implications for democracy. She directs a major transnational programme on Democracy in Europe and the Mobilization of Society. Alexander Trechsel is working on the extent and implications of electronic democracy, looking at the implications of new communications technology on political participation.

International relations and security includes theoretical issues in the study of international order, the emergence of new forms of international order in the work of Friedrich Kratochwil and ethics of international relations covered by Christine Chwaszcza. Pascal Vennesson (joint professor with the Robert Schuman Centre for Advanced Studies) directs the programme on security policy, including the interconnections between internal and external security, and the new security agenda. An important axis of research is the emergence of Europe as an international actor and members of the department are involved in the Transatlantic and Mediterranean programmes run by the Robert Schuman Centre for Advanced Studies.

Questions of **social and political theory** run through many of the department's research interests but is the main focus for Christine Chwaszcza, who works on moral and political philosophy, global justice, theory of action and practical rationality. Democratic theory and practice, including participatory democracy, the evolution of public spheres, urban democracy and multinational democracy are covered by Donatella della Porta, Alexander Trechsel and Michael Keating. The department is currently making a new appointment in the field of Social and Political Theory.

The department hosts a number of visiting scholars each year, whose work is linked to that of the professors. They are available for consultation, and normally present guest seminars based on their current research.

The department's **doctoral programme** puts a strong emphasis on the theoretical and methodological tools required for PhD research. In the first year there is a common core course on approaches and methods in the social sciences, the last part of which is devoted to discussing the doctoral researchers' thesis designs. Additional courses in both quantitative and qualitative methods are available as options. A wide range of seminars is also offered in substantial fields, many of them linked to the current research interests in the department. The academic year is divided into three terms. In the first two, seminars meet on a weekly basis for a minimum of ten weeks. In the third term, there are short, intensive workshops on particular topics, often with invited speakers from other universities. Further intensive courses and workshops are offered as needed to and some researchers go to the summer schools offered by the ECPR and other organizations. Some of the seminars are interdisciplinary and offered jointly with professors from other departments in the Institute. Colloquia organized by professors with their supervisees provide spaces for discussion of research design and problems.

Faculty with country of origin and research interests

Stefano Bartolini (Università degli Studi di Bologna)

– Comparative politics: Historical and contemporary patterns of political and electoral competition; the impact of European unification on the forms of domestic political representation.

László Bruszt (Central European University, Budapest) – Transitions: Transnationalization; institutional development and economic change.

Christine Chwaszcza (Universität Kiel) – Political and social theory: Human rights; global justice; humanitarian intervention; theory of action, social action; theories of rationality and practical judgement.

Donatella della Porta (Università degli Studi di Firenze) – Comparative politics and sociology: Social movements; political violence, terrorism, corruption, police and politics of public order.

Jaap Dronkers (Universiteit van Amsterdam) – Comparative sociology: Social stratification; educational policy and outcomes; divorce; nobility.

Virginie Guiraudon (CNRS, Lille); Marie-Curie Chair [until December 2006] – Comparative politics and international relations: sociological approaches to the European Union, immigration policy and politics.

Adrienne Héritier (Universität Bielefeld) – European public policy: New modes of governance; deregulation and re-regulation; legislative processes in the European Union.

Michael Keating (University of Aberdeen) – Comparative politics: Urban and regional politics; nationalism; public policy and decentralization; European integration and sovereignty.

Martin Kohli (Freie Universität Berlin) – Comparative sociology: Life course, generations, societal ageing; intergenerational transfers and inheritance; European social structures, kinship and welfare states; collective identities.

Friedrich Kratochwil (Universität München) – International relations: Comparative politics (methodology); political theory; international organization; international law.

Peter Mair (Universiteit Leiden) – Comparative politics: Europe; elections; political parties; political institutions; democracy.

Rikard Stankiewicz (Lunds Universitet) – Comparative sociology: Technological change, science technology-relations; knowledge base of technology; the impact of new biotechnologies on innovation in the healthcare sector.

Sven Steinmo (University of Colorado, Boulder) – Public policy: Historical institutionalism; social policy and welfare states; comparative political economy.

Alexander H. Trechsel (Université de Genève) – Comparative politics: e-democracy; direct democracy; federalism; European integration and political behaviour.

Pascal Vennesson (Université Panthéon-Assas, Paris II) – International relations: Security in Europe; international security; defence policies; strategy and policy; civil-military relations; causes of war.

Peter Wagner (University of Warwick) [until December 2006] – social and political theory: social theory and political philosophy in contemporary Europe with a special emphasis on 'European Modernity'.

Stein Rokkan Chair in Comparative Politics: to be appointed in Spring 2006.

Chair in Social and Political Theory: to be appointed in Spring 2006.

For a full overview of activities please consult the departmental web pages: <http://www.iue.it/SPS/>.



Stefano Bartolini



László Bruszt



Christine Chwaszcza



Donatella della Porta



Jaap Dronkers



Virginie Guiraudon



Adrienne Héritier



Michael Keating



Martin Kohli



Friedrich Kratochwil



Peter Mair



Rikard Stankiewicz



Sven Steinmo



Alexander H. Trechsel



Pascal Vennesson



Peter Wagner



The Doctoral Programme

A four-year structured curriculum

The four-year structured programme prepares researchers for the submission and defence of a doctoral thesis. It aims to develop their skills to carry out independent research. In this process, the researcher will be guided under the close supervision of an experienced scholar. The programme is structured around taught courses on research methodology and advanced research seminars. The researcher is required to participate actively in workshops, seminars and conferences and is expected to present research in progress on a regular basis.

The first year is primarily dedicated to providing a solid background for the doctoral work and the design of the projected research. Each department has developed an appropriate structured programme of taught courses and/or seminars relevant to the discipline(s). For details of each department see the EUI web site.

The second and third year are dedicated to research, fieldwork, data collection and writing the thesis. Each department defines the content of activities which will guide the research students in their doctoral research, such as seminar participation and presentation of the research in progress. The supervisor closely follows the work of the research students and assesses progress made.

The fourth year is dedicated to finishing and defending the thesis; part of the year can also be used for professional or university traineeships.

Applications

Application to the programme for the academic year 2007/2008 will be by means of an on-line application form that will be active from mid-October at the EUI web site: www.iue.it. Full information on the application

procedure will be displayed at this site and any further enquiries may be addressed to email: applyres@iue.it or to the Institute at the postal address.

Call +39-055-4685-373 or write to the EUI, Admissions Office, Badia Fiesolana, I-50016 San Domenico di Fiesole, Italy.

Admission

The Institute welcomes researchers from Member States. Furthermore, nationals from a number of non-EU countries benefit from special grant agreements. For details, please consult the information about grants on p. 24

Selection criteria

For admission the primary consideration is academic qualification and talent. Candidates should however have sufficient background in theory and research methodology relevant to the discipline. Capacity to supervise the candidates proposed, taking into account the profile of the department, is also a determining consideration.

Each candidate should have a knowledge of two languages of the European Union. At the interview the candidate takes a short test in the language most relevant for his/her research where it is not his/her mother tongue. If special recommendation is made to improve language competence, final admission is conditional upon the required progress being made.

Selection

Candidates are selected in two steps. The first step is selection based on the information provided in the application file. The second step is based on the interview of short-listed candidates in Florence by faculty of the department.

Grants

Once admitted, research students receive a grant for the four years they are at the Institute. There are no tuition or registration fees for students from European Union Member States. EU candidates please take note that national regulations on awards vary from country to country and ***it is always advisable to check with the national authority, particularly as regards questions on dual nationality or residency***. For updated details consult the EUI web pages.

Exchanges

The European University Institute is involved in a network of postgraduate schools/ universities in Europe and the United States. Within this framework exchanges of researchers are possible for periods of up to a semester if beneficial for the doctoral education. Travel grants and additional allowances are provided for.

For further information about the Doctoral Programme and to consult the *Code of conduct for supervision*, please refer to the following web page: <http://www.iue.it/Servac/Postgraduate/EUIDoctorate/DoctoralProgramme.shtml>



National Grant Awarding Bodies

België/Belgique

Maandelijkse beurs: € 1171
 Familietoelage: nee
 Reistoelage: ja
 Verzekering: ja

Bourse mensuelle: € 1171
 Allocation familiale: non
 Allocation voyage: oui
 Assurance: oui

Programmatorische
 federale overheidsdienst
 Wetenschapsbeleid
 Wetenschapsstraat, 8
 B-1000 Brussel

Service public fédéral
 de programmation
 Politique Scientifique
 rue de la Science, 8
 B-1000 Bruxelles

Tel. +32-2-238 3423
 Fax +32-2-230 5912

Danmark

Månedligt stipendiebeløb: € 2000
 (brutto)
 Familietilskud: nej
 Rejsetilskud: ja
 Forsikring: nej

Anders Bjørneboe
 Head of Section
 Ministry of Science, Technology and
 Innovation
 Bredgade 43
 DK-1260 København K

Tel. +45-7226 5607
 Fax +45-3393 8403
 E-mail: abr@vtu.dk

Deutschland

Monatl. Stipendium: € 800 (LL.M)
 € 1025 (Ph.D.)
 Doktoratszulage: € 102
 Familienzulage: ja
 Reisekostenzulage: ja
 Versicherung: ja

Deutscher Akademischer Aus-
 tauschdienst
 Referat 314
 Kennedyallee 50
 D-53175 Bonn
 Tel. +49-228-882 227
 Fax +49-228-882 551
 E-mail: paffhausen@DAAD.de
<http://www.daad.de>

España

Beca mensual: € 1300
 Ayuda por dependiente: no
 Bolsa de viaje: si
 Seguro: si

Los candidatos españoles (y ibero-
 americanos) deberán presentar on-
 line su solicitud y la correspondien-
 te documentación con la AECL y con
 el IUE dentro del plazo fijado en la
 Convocatoria de Becas MAEC-AECL.
 No podrá recibir beca quien no la
 haya solicitado on-line y no haya
 presentado la documentación.

Ministerio de Asuntos Exteriores y
 de Cooperación,
 A E C I (Agencia Española de Coope-
 ración Internacional)
 Subdirección General de Becas, Lec-
 torados e Intercambios,
 Avenida Reyes Católicos 4
 E-28040 Madrid

Tel. +34-91-583 8141
 Fax +34-91-583 8276
www.becasmae.es

Eeste/Estonia

Monthly Grant: € 1030
 Family allowance: no
 Travel allowance: yes
 Insurance: no

Foundation Archimedes
 Centre for Academic Mobility
 Katrin Kiisler
 Head of the Agency
 Koidula 13a
 EE - Tallinn 10125

Tel. +372-696 2418
 Fax +372-696 2426
 E-mail: katrin@archimedes.ee

France

Bourse mensuelle: € 1109
 Allocation familiale: oui
 Allocation voyage: non
 Assurance: non

EGIDE
 Service France - Programme BFE
 28, Rue de la Grange-aux-Belles
 F-75010 Paris

Tel. +33-1-4040 5930

Les candidats de nationalité
 française sont invités à consulter les
 page du site d'ÉGIDE :
<http://www.egide.asso.fr/fr/programmes/bfe/lavoisier/florence.jhtml>
 pour toutes les informations
 concernant les conditions, la consti-
 tution et l'envoi de la demande de
 bourse.

Ελλάδα/Greece

Monthly Grant: € 1050
 Family allowance: no
 Travel allowance: no
 First settlement costs: € 450
 Insurance: yes

Greek State Scholarship
 Foundation (IKY)
 Unit for Scholarships Abroad
 Lysikratous 14
 GR-105 58 Athens

Tel. +30-210-372 6300, 372 6370
 Fax +30-210-322 1863, 323 4192

Ireland

Monthly Grant: € 1058
 Family allowance: yes
 Travel allowance: yes
 Insurance: yes

Department of Education and Science
 Higher Education Grants Section
 Portlaoise Road
 IRL-Tullamore, Co. Offaly
 Tel. +353-506-213 63

Italia

Borsa mensile: € 1070
 Assegno familiare: no
 Indennità di viaggio: no
 Assicurazione: no

Ministero degli Affari esteri
 DG PCC, Ufficio VI
 Piazzale della Farnesina, 1
 I-00194 Roma

N.B. All enquiries for admission and grant information are to be directed to the EUI.

Κύπρος/Cyprus

All details regarding the conditions and amount of the grant are currently under consideration.

Department of Higher and Tertiary Education
 Ministry of Education and Culture
 Corner of Kimonos and Thoukididou
 1434 Nicosia - Cyprus

Tel. +35-7-2280 0616 / 7
 Fax +35-7-2242 7560
 E-mail: daae@moec.gov.cy
 www.moec.gov.cy

Luxembourg

Bourse mensuelle: € 1333
 Allocation familiale: non
 Allocation voyage: non
 Assurance: non

Ministère de l'Éducation nationale de la formation professionnelle et des sports,
 29, rue Aldringen
 L-2926 Luxembourg

Tel. +352-478 5163

Nederland

Maandelijkse beurs: € 1340
 Familietoelage : ja
 Reistoelage: ja
 Verzekering: ja

NUFFIC
 drs. Olga Marschal
 Cospa coordinator & Programme manager
 P.O. Box 29777,
 NL-2502 LT The Hague

Tel. +31-70-426 0238
 Fax +31-70-426 0259
 E-mail: marschal@nuffic.nl

Österreich

Monatl. Stipendium: € 1200
 Familienzulage: ja
 Reisekostenzulage: nein
 Versicherung: nein

Bundesministerium für Bildung,
 Wissenschaft und Kultur
 Abt.VI/7
 Teinfaltstraße 8
 A-1010 Wien

Tel. +43-1-53120/6045
 Fax +43-1-53120 817133

Polska

Monthly Grant: € 1070
 Family allowance: no
 Travel allowance: yes
 Insurance: yes

Awards are for doctoral students only

General Director Office
 (Mr. Piotr Ronkowski)
 Office of the Committee for European Integration
 Al. Ujazdowskie, 9
 PL-00-918 Warszawa

Tel. +48-22-455 5388
 Fax +48-22-455 4404

Portugal

Bolsa de estudo mensal: € 1155
 Subsídio para acompanhante: não
 Subsídio de viagem: sim
 Seguro: sim

Ministério dos Negocios Estrangeiros
Direcção-Geral dos Assuntos Comunitários
Palacio Cova da Moura
Rua da Cova da Moura 1
P-1350 Lisboa

Tel. +351-21-393 5500
Email: bolsas.iue.ce@dagc.pt

Slovenia

Monthly Grant: € 1070
Family allowance: yes
Travel allowance: yes
Insurance: yes

Ad futura, javni sklad
Kotnikova 34,
SVN-1000 Ljubljana

Tel. +386-1-434 1080
Fax +386-1-434 1092
E-mail: info@ad-futura.si
www.ad-futura.si

Suomi/Finland

Kuukausittainen apuraha: € 1600
Puolisoavustus: ei
Matka-avustus: kyllä
Vakuutus: ei

The Academy of Finland,
Research Council for Culture and Society,
(Mr. Kustaa Multamäki),
PO Box 99
Vilhonvuorenkatu 6
FIN-00501 Helsinki

Tel. +358-9-7748 8349
Fax +358-9-7748 8388

Sverige

Månatligt stipendium: € 1575 approx.
Resetraktamente: ja
Försäkring: ja

Rolf Höijer
Head of Division
Division of Humanities and Social Sciences
Swedish Research Council
Regeringsgatan 56,
S-10378 Stockholm

Tel. +46-8-5464 4166
Fax +46-8-5464 4320

UK

Monthly Grant: € 1070
Family allowance: yes
Travel allowance: yes
Insurance: yes

Student Support,
Contact Centre,
Podium 38
Mowden Hall
Staindrop Road
Darlington
Co. Durham
GB - DL3 9BG

Tel. +44-1325-215 121
Fax +44-1325-391 220

Associated States

Norge

Doktorgradsstipend pr mnd:
€ 2700 (brutto) pluss driftsmidler
Bidrag for partner: nei
Reisepenger: nei
Forsikring: Syketrygdsordning

Norges Forskningsrad
Kultur og samfunn
P.B. 2700 St. Hanshaugen
N-0131 Oslo

Tel. +47-22-037 393

Schweiz/Suisse/Svizzera

Monatl. Stipendium: € 1200
Familienzulage: nein
Reisekostenzulage: nein
Versicherung: nein

Bourse mensuelle: € 1200
Allocation familiale: non
Allocation voyage: non
Assurance: non

Borsa mensile: € 1200
Assegno familiare: no
Indennità di viaggio: no
Assicurazione: no

Staatssekretariat für Bildung und Forschung
Ressort Bildung
Hallwylstrasse 4
CH-3003 Bern

Secrétariat d'État à l'éducation et à la recherche (SER)
Secteur Formation
Hallwylstrasse 4
CH-3003 Bern

Segreteria di Stato dell'educazione e della ricerca (SER)
Hallwylstrasse 4
CH-3003 Bern

Tel. +41-31-322 9669 / 323 2674
Fax +41-31-322 7854

Korea

The Korean National Research Council (NRCS) offers doctoral grants. For further details, please contact the coordinator, Prof. Lee Keun-Gwan, College of Law, Seoul National University, San 56-1, Shillim-Dong, Gwanak-Gu, Seoul, Korea 151-742. Tel. +82-2-880 7555; klee60@snu.ac.kr

Other Grant Programmes

1. For nationals of non-EU States:

i) *Central and Eastern Europe, Russia and CIS*

Bulgaria, Croatia, Romania, Russian Federation, Azerbaijan, Armenia, Belarus, Georgia, Kazakhstan, Kyrgyzstan, Moldova, Tajikistan, Turkmenistan, Uzbekistan and Ukraine.

ii) *South East Europe*

Albania, Bosnia and Herzegovina, FYR of Macedonia, Serbia and Montenegro

iii) *South and East Mediterranean*

Algeria, Egypt, Jordan, Lebanon, Libya, Morocco, Palestinian Territories, Syria, Tunisia

Monthly grant: € 970

Family allowance: no

Travel allowance: yes

Insurance: yes

Grant authority:

Ministero degli Affari Esteri

DGPCC (Ufficio VI) and DGCS (Ufficio IX),

Piazzale della Farnesina 1,

I-00194 – Roma

N.B. All enquiries for admission and grant information are to be directed to the EUI.

2. Latin America

Honduras, Nicaragua, El Salvador, Guatemala, Haití, República Dominicana, Paraguay, Bolivia, Perú, Ecuador, Cuba, Colombia, Costa Rica, Brasil, México, Chile, Venezuela, Panamá, Argentina, Uruguay.

The Spanish *Ministerio de Asuntos Exteriores y de Cooperación (MAE-AECI)* offers a small number of grants to the Institute for applicants from the above-mentioned Latin American countries.

Candidates from any of these countries interested in applying to the EUI must complete the standard online EUI application form and also fill in the separate grant application form at the Spanish Ministry's website: <http://www.becas-mae.es>.

For both Spanish and Latin American nationals, an annual *Convocatoria* for academic year 2007-2008 will be published on the Ministry's web site.

The conditions of the grants awarded to Latin American candidates are the same as those marked for Spain.

3. For Nationals of new EU Member States

Cyprus, Estonia, Poland and Slovenia already have grant agreements in place with the EUI (details on the EUI grant pages).

No grant agreements have yet been signed with the Czech Republic, Hungary, Latvia, Lithuania, Malta or Slovakia. EUI policy is to bring all new EU Member States in as full Contracting States of the Institute at the earliest possible stage, and include agreements for the award of grants.

Candidates from these countries who intend to apply to the Institute are nevertheless encouraged to do so since agreements may be reached during the course of 2006/2007.



The Post-doctoral Programme: 4 Possibilities

A unique place in Europe for post-doctoral studies. There are not many places in Europe that provide post-doctoral training facilities.

At the European University Institute, young postdocs can find alternatives to the programmes available in the United States.

1. The **Jean Monnet Fellowship Programme** at the Robert Schuman Centre for Advanced Studies (RSCAS) with its emphasis on research is available to junior academics at an early stage of their careers.

The Institute-funded fellowships are complemented by other externally-funded grants, in particular the Marie Curie grants. See page 32.

2. The **Max Weber Fellowship Programme**, started in 2006, for junior postdocs who would like to embark on an academic career and improve their teaching and professional skills. See page 34.

3. **Marie Curie Fellowships.** The EUI supports, as a host institution, a limited number of applications to the various Marie Curie Fellowship schemes operated by the European Commission. Potential applicants should send their expression of interest to the EUI approximately two months before the deadline of the Commission (the exact date is announced on the EUI website) to allow time for their consideration. The EUI will decide on the follow-up on the basis of an internal academic evaluation and the availability of adequate supervision in the field. All candidates will be informed of the result of this evaluation well in time before the deadline for submitting the applications to the Commission.

For further information please consult <http://www.iue.it/Servac/Postdoctoral/MarieCurieFellowships.shtml> or contact apply.mariecurie@iue.it.

More information about Marie Curie actions can be found on the following website: http://www.europa.eu.int/comm/research/fp6/mariecurie-actions/index-htm_en.html.

4. Other fellowships

STINT (The Swedish Foundation for International Cooperation in Research and Higher Education) awards fellowships for post-doctoral research at the European University Institute. The fellowships are open to candidates holding a doctoral degree from a Swedish university or a Swedish citizen holding a doctoral degree from a university outside Sweden. For further information please consult <http://www.stint.se>.

The Foundation for Polish Science, as part of a competition to award international post-doctoral fellowships to young Polish scientists, has offered in recent years a one-year research fellowship at the RSCAS for research in research topics which play an important role in the European integration process. For additional information please check: http://www.fnp.org.pl/programy_aktualne/nagrody_stypendia_zagraniczne.html (in Polish only), and www.fnp.org.pl/english/fellow.young.htm.

The Academy of Finland awards fellowships for post-doctoral research at the European University Institute. The Academy also invites applications for a post of a Research Fellow at the Institute for a duration of maximum five years, preferably in the field of intellectual property rights. The fellowships are open to candidates from Finland holding a doctoral degree. For further information please consult <http://www.aka.fi>.

Canon Foundation Fellowship

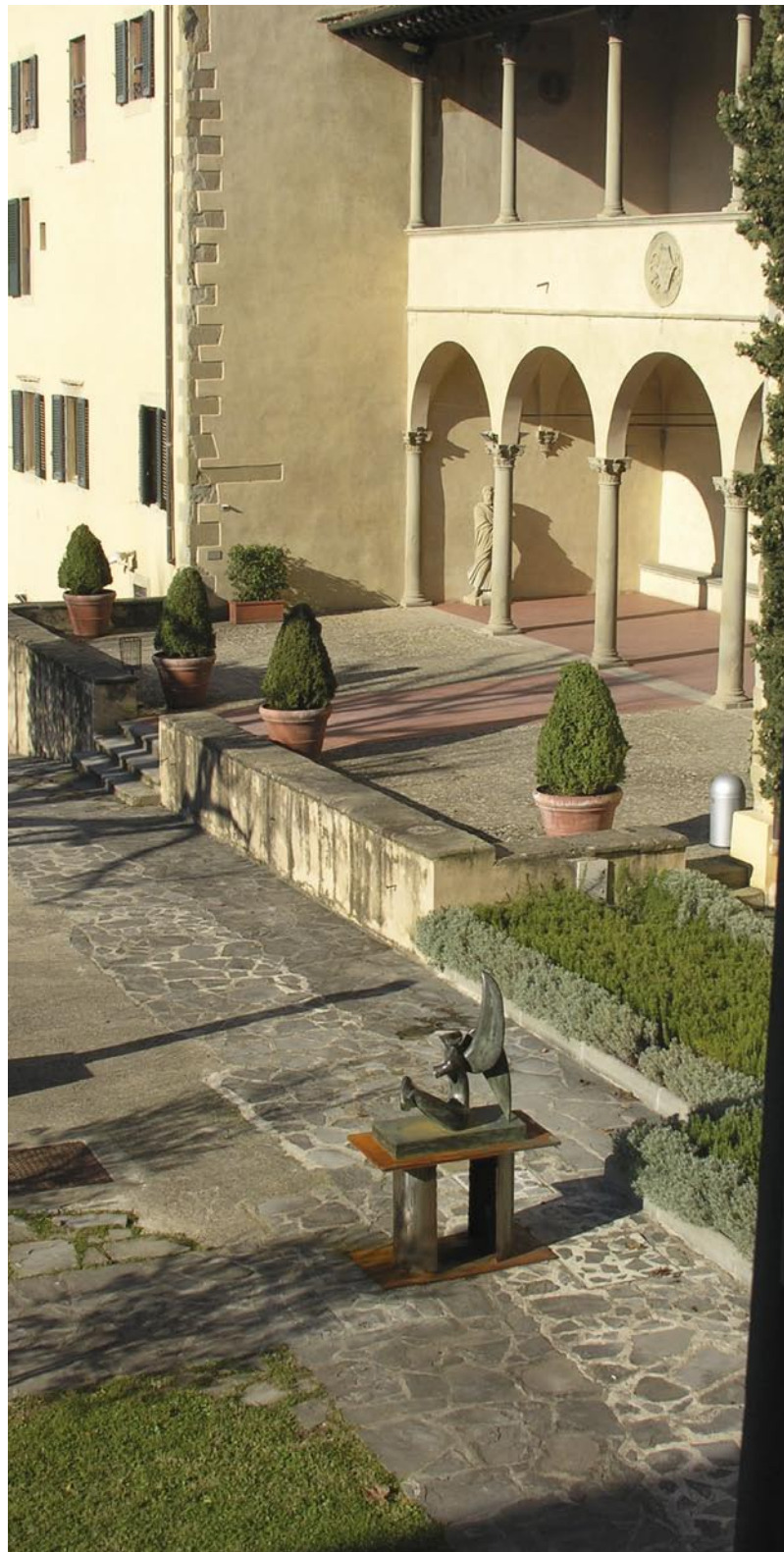
The Canon Foundation and the EUI jointly award one Canon Foundation Fellowship for post-doctoral research at the Institute. This fellowship is open to candidates of Japanese nationality or to permanent residents of Japan.

Deadline for applications: 15 September 2006. For further details please consult the Institute's website at <http://www.iue.it/Servac/Postdoctoral/>.

The Gulbenkian Foundation awards two post-doctoral grants for research at the RSCAS for Portuguese nationals or Portuguese-speaking candidates. For further details please consult the Institute's website at <http://www.iue.it/Servac/Postdoctoral/>.

Other hosted fellowships: Post-doctoral researchers with interests in relevant fields are also encouraged to apply to national funding schemes for which the EUI is an acceptable host institution and should proceed in the same way as for Marie Curie Fellowships.

For questions with regard to the application procedure for all these schemes, applicants should contact Ms Eija Heikkinen (applyfellow@iue.it), or visit the relevant web pages <http://www.iue.it/Servac/Postdoctoral/>.





The Robert Schuman Centre for Advanced Studies

The Robert Schuman Centre for Advanced Studies (RSCAS) is a comparative and interdisciplinary research centre whose research focus is on Europe and the processes of European integration, broadly defined. The goal is to understand, in a comparative perspective, the continent's rich diversity in terms of history, law, economics, politics and culture, and how it fits into the broader international system or illustrates broader global processes.

Research is organised around the following themes:

1. Institutions, Governance, Constitutionalism.

Recent and current work examines: issues relevant to the debate on EU institutional and constitutional reform; evolution and experimentation in European governance; the development of constitutional rights and values in the European Union; comparison across European countries of political, legal and policy processes; and some of the broader issues of global governance. The Centre is presently co-ordinating a Sixth Framework Programme Integrated Project on New Modes of Governance, with 35 partner institutions.

2. Economic Policy. The development of the European Union carries with it important implications for the design of economic policy. This is not only the case with the adoption of a single currency and a monetary policy in the Eurozone, but also applies to policy issues to do with taxation, regulation, labour markets, the welfare state and the environment. The Centre's goal is to study in a rigorous way economic policy issues relevant for the global economy, with particular attention to the old and new European economies.

3. Regulation and Competition Policy. Europe has provided an especially important laboratory for developing transnational and supranational forms of regulation

and competition rules. The Centre has long been at the forefront of work in this field, both exploring European regulation in depth and examining the interfaces with global regulation, both formal and informal. The Centre has over the years carried out practitioner-oriented activities on issues of European regulation and competition. These include the annual Competition Policy Workshop, and the annual Energy Law and Policy Workshop. Since 2004 an initiative has been taken to develop these practice and policy-oriented activities into the Florence School of Regulation.

4. The Knowledge Economy: Education, Research and Innovation Systems. The evolution of the knowledge production via education, research and innovation systems in contemporary societies is crucial. These systems are the primary, though by no means sole, drivers of innovation both in the economy and the society at large. They are the key elements of the larger institutional clusters, generally referred to as 'innovation systems' or 'research and innovation systems'. They depend in turn on the character of education and renewal of education systems. The Centre's current research has a double focus: on the relationship between the structure of the knowledge base, the dynamics of research and the innovation processes; and on the institutional framework within which these processes operate, and which largely conditions their success.

5. Culture and Knowledge. Much of cultural analysis during the 19th and 20th century has worked with a concept of culture as shared values and beliefs, assuming the existence of well-defined and bounded human communities with high cultural homogeneity. In contrast, the view at the Centre is that such communities are the *result* of processes of 'cultural construction of community' with the aim to produce both boundedness and internal

coherence. Processes of cultural construction of community and boundaries are analysed in a pronounced historical perspective, and in particular as regards the process of building a European society, taking diversity as a point of departure.

6. International and Transnational Relations. The European Union is an international actor of growing significance. Its external policies and those of its member states have major impacts on its various partners and neighbours. In parallel developments in Europe's neighbourhood and elsewhere in the world impact on European societies and policies. In recent years the Centre's focus has been on: enlargement of the European Union; the Mediterranean region; and transatlantic relations. The global trade regime, European foreign and security policies, the promotion of human rights and democracy, and transborder issues notably migration, citizenship, identity or critical problems such as the geopolitics of energy and energy security are among the Centre's interests. As the current phase of enlargement proceeds, the attention is turned to the wider 'neighbourhood'. Some of the relevant issues are addressed by the Mediterranean Programme and the Transatlantic Programme, others by the developing work on European security and on migration. International migration is one of the Centre's current priority fields. Since 2004 the Centre has hosted the Co-operation project on the social integration of immigrants, migration and the movement of persons (CARIM), financed by the Meda Programme of the European Commission.

7. Transversal Research Areas. Several important research topics cut across the themes outlined above. In particular, the Centre hosts a large number of externally funded research projects and facilitates interdepartmental working groups.

The annual European Forum brings together promising scholars in the early stages of their careers to conduct research, primarily of a comparative and interdisciplinary nature, on a shared theme.

The European Forum 2007 – 2008

Political violence and terrorism: patterns of radicalization in political activism. Directed by Donatella Della Porta (Department of Political and Social Sciences) and Gerhard Haupt (Department of History and Civilization) The European Forum will address one of the major challenges of present day societies: political violence, including its extreme form as terrorism. Participants in the Forum will assess the value of some of the central concepts of sociological and historical research which analyse different historical and contemporary forms of political violence and terrorism. In particular, they will discuss the specific social and political contexts that shape collective actors' strategic choices, their particular ideological and organizational resources, as well as the characteristics of activists' values and motivations. Special attention will be paid to the methods available in research on social movements and political violence in both historical and sociological research. The overall aim of the European Forum will be to determine to which extent the patterns of present-day terrorism and political violence are particular to the historical period and specific countries or geographical areas; and to which extent there are instead similarities in time and space in the characteristics of political violence and its causes and mechanisms. The transhistorical and the transgeographic comparison will be central elements of the project. Further details about the European Forum 2007/8 are available on the web and will be periodically updated. (<http://www.iue.it/RSCAS/Research/EuropeanForum/Index.shtml>).

Why apply for a Jean Monnet Fellowship at the RSCAS?

'The Robert Schuman Centre for Advanced Studies and the European University Institute provide an extraordinary concentration of scholarship and expertise on the history and development of European countries as well as expertise on methodologies and theoretical approaches to study European Societies from all perspectives and disciplines. This cross-fertilisation of many approaches is surprisingly well co-ordinated by the administration and the infrastructure of the RSCAS and EUI.'

'Last but not least, my JMF has been instrumental in my job search, which has been successful.'

'The interdisciplinary environment of the Schuman Centre has been key for me to expand the scope as well as focus the objectives of my research. This leads me to what is, I believe, the strength of the Institute, especially for your post-doctoral fellows, that is the concentration of expertise from virtually all the social sciences, in an environment that favours exchange and cooperation...'

'The vivid intellectual exchange with so many excellent professors from the RSCAS as well as the Political and Social Sciences Department of the EUI and with the peer Fellows was extraordinarily rewarding.'

'The openness on the part of the EUI academics and the presence of a 'critical' mass of JMFs/Visiting Fellows from different disciplines create a lively atmosphere for exploring topics outside one's own little niche.'

'The RSCAS is an excellent place for European integration research both in terms of interesting people and infrastructure.'

The Director

Stefano Bartolini has been appointed as director of the Centre as of September 2006, succeeding Helen Wallace (2001-2006), and Yves Mény, its first Director (1993-2001).

Research at the Centre is done both by the Centre's full-time professors, who all hold a 'joint chair' with one of the teaching departments, and in the context of a large number of research programmes and projects hosted by the Centre. The Centre's full time professors in the academic year 2006/7 are:

In Economics: Giancarlo Corsetti and Rick van der Ploeg;

In History and Civilisation: Bo Stråth;

In Law: Ernst-Ulrich Petersmann and Heike Schweitzer;

In Social and Political Sciences: Virginie Guiraudon, Adrienne Héritier, Rikard Stankiewicz and Pascal Vennesson, Philippe Fargues (part-time professor) directs the CARIM, Pippo Ranci (part-time professor) directs the Florence School of Regulation.

The Centre hosts a large number of externally funded research programmes and research projects, such as the Pierre Werner Chair Programme on European Monetary Union, an FP6 Integrated Project on New Modes of Governance, the Mediterranean Programme, the Transatlantic Programme, and many others.

The Centre has a Steering Committee with members from across the EUI and two external members: Prof. André Sapir, Université Libre de Bruxelles, and Prof. Fritz Scharpf, Max Planck Society, Köln.

The Post-Doctoral Programme of the Robert Schuman Centre for Advanced Studies

Jean Monnet Fellowships. The Centre offers post-doctoral Jean Monnet Fellowships, about ten of which are attached to the annual European Forum. The other fellowships are in the context of the RSCAS general programme, with a focus on the core research themes of the Centre. The Centre offers 2 Vincent Wright Fellowships in memory of the distinguished political scientist, especially reserved for young post-doctoral students and junior academics working on 'European Comparative Politics' and 'The History of State Formation and the Development of Administration since the XIXth Century in Europe'.

Jean Monnet Fellowships are intended to support post-doctoral research without teaching obligations by academics in the early stages of their professional career. The research must lead to a publication, e.g. an RSCAS working paper. Fellows are encouraged to be associated with the EUI's teaching and research activities.

RSCAS post-doctoral fellows are accommodated either in Villa La Fonte or in the Convento, both historical and peaceful places, with a personal computer and up-to-date research software and networking facilities. Information on other facilities and advice about housing, crèches and schools are available at www.iue.it/Servac/PracticalInformation.

Eligibility

Applicants are eligible if they have successfully defended their PhD at the time of the start of the fellowship (1 September). Applicants are eligible during the seven-year period following the defence of their PhD. There are no age or nationality requirements.

Selection criteria

- academic excellence
- fit with the Centre's research themes.

Financial conditions

Fellows will receive a monthly stipend of €2000 plus allowances (if applicable). Successful applicants benefiting from other grants or salaries must disclose this to the EUI, as the amount of the fellowship might be fixed at a lower level.

Small grants for conference participation

In order to improve the fellows' opportunities for professional exposure in international conferences in their fields of research, modest funds will be available, under certain conditions, as a contribution towards the costs of participation in appropriate professional conferences at which a paper is presented.

Duration

Fellowships will be awarded for 12 months. In exceptional cases applications for shorter periods, but in no case for less than 6 months, can be considered.

Deadline for applications: 25 October 2006

For further details see <http://www.iue.it/Servac/Post-doctoral/JeanMonnetFellowships/>.



The Max Weber Fellowship Programme for Future Academics

The Max Weber Fellowships are open to candidates who have recently received their doctorates in economics, social and political sciences, law or history and who wish to pursue a career nationally or internationally as future academics. Fellowships are granted for 12 or 24 months with a view to better preparing successful candidates for advanced research in a context of growing Europeanisation and internationalisation of university education. Fellows will have the opportunity to work in close cooperation with the departments of the EUI. In order to ensure full benefit from close association with the departments, priority will be given to candidates whose profiles fit closely with existing interests and orientations (details of which are available on the website, www.iue.it). The Post-doctoral Programme will address in particular the challenges that Europe faces in a globalised world.

However, candidates whose interests diverge from this provisional agenda are encouraged to apply if their research interests are in line with the profile of the departments (see www.iue.it).

The Programme will comprise three main elements: research activities, either through the development of individual projects or through involvement in collective disciplinary or interdisciplinary projects; teaching and course development training and practice; acquisition of other skills necessary to professional development, including methodological, research design and development, electronic media and language skills.

Programme Themes: 'Europe in a Globalised World'

Areas of particular interest are:

- The changing social demography of Europe, including the history of migration, the consequences of ageing populations, employment, family, health and education and of new migration trends
- Democracy and Republicanism as theories, practices

and models in Europe's past and in the European Union's current constitutional discussion

- Formation and transformations of empires and nation states, and their relations to civil societies
- International Law/International Relations: universalism and globalization, impact on human rights, security issues
- The transformation of regulatory methods, tools and institutions in their social, legal, economic and political dimensions and in historical perspective
- The distinctiveness of the European Union as a social, legal, economic or political model. Its roots in Europe's history
- European policies: Economic growth, trade and development, fiscal and monetary policies, innovation and technology, anti-trust policies and social regulations
- Cultural heritage: definitions over time; protection of cultural diversity

Methodological interests and approaches

- Analysis of time series – Methods and applications
- Paradigms shifts in the social sciences;
- New approaches to and methods of comparative research;
- Novel applications of panel-data analysis
- Historical approach: a *longue durée* perspective

Successful candidates will participate in a common framework programme and will also benefit from the enhancement of specific competences relevant to their disciplines and/or needs. Each fellow will be associated with a professor, or group of professors, in order to facilitate involvement in the teaching and research activities of the Institute. The programme aims at supporting innovation in both teaching and research by providing a truly transnational academic training environment which draws on the most challenging and stimulating experiences in Europe and beyond.

Applications

Candidates should submit their application by **25 October 2006**. They should specify the research interests they wish to develop as well as the fields and sub-fields in which they would like to improve their teaching capacities. Reference should be made to past or present teaching experience.

Eligibility

Applicants are eligible if they have

- successfully defended their Ph.D. at the time of the start of the programme (1 September);
- candidates are eligible during the five-year period following the successful completion of their Ph.D. (between 1/9/2002 and 1/9/2007).

There are no age or nationality requirements.

Selection criteria

- academic excellence
- pedagogical priorities, i.e. experience or ambitions
- fit with the research interest in the departments

Financial conditions

Fellows will receive a monthly stipend of €2000 plus allowances (if applicable). Successful applicants benefiting from other grants or salaries must disclose this to the EUI, as the amount of the fellowships might be fixed at a lower level.

Duration

Grants will be awarded for 12 or 24 months.

Deadline for applications: 25 October 2006

For further details see <http://www.iue.it>.

Fernand Braudel Senior Fellowships

The Fernand Braudel Senior Fellowship Programme provides a framework for established academics with an international reputation for the pursuit of research at the Institute. Fellows carry out their research in one of the Institute's four departments. The departments invite fellows to participate in the activities which they organize (seminars, workshops, colloquia). Fellows are also encouraged to make contact with researchers with the same academic interests, and they may be involved in the teaching and thesis supervision tasks of Institute's professors. Fellows may be associated with one of the research projects under way at the Institute.

Eligibility

The fellowships are open to established academics with an international reputation. Former professors or fellows of the Institute are eligible beyond three years' expiry of their last contract.

Financial conditions

The monthly grant is € 1500 - 3000. If the fellow continues to receive a salary from his/her home university, the maximum amount is € 1500.

Duration

The fellowships will be for 3 to 10 months. The Department of Political and Social Sciences expects the fellows to stay a minimum of 6 months.

Deadline for applications:

There are two annual deadlines:

30 September and 30 March

For further details see <http://www.iue.it>.



Facilities and support services

The Library

Research at the Institute is supported by a top class library and a team of experienced librarians and information specialists, who can provide in-depth and personal services.

The EUI Library is a 'hybrid' library, comprising both an extensive collection of traditional resources – books, documents and journals on paper or in microform – and a rapidly growing digital component. In the collections users find more than 2500 current journals, over 70,000 working papers and approximately half a million books in law, economics, history and civilisation, and political and social sciences, with European issues being particularly well represented. Most of the Library's holdings are on open access.

Via its webpages (<http://www.iue.it/LIB/>) the Library provides access to more than 4000 full text electronic journals; access to bibliographic and statistical databases as well as many free web-based resources of particular interest for research at the EUI.

Users have a range of services at their disposal, all of which aim to put information within easy reach: on-demand acquisition of books, generous lending policies, fast document delivery services and interlibrary loan facilities, access to electronic text and data, remote login, photocopying, printing, downloading, reference and personal instruction. Using their own laptops users can have access to the campus network from many fixed network access points throughout the Library and also through the wireless LAN.

The Computing Service

The Computing Service's (CS) mission is to provide continuous and complete integration of technology into the academic and administrative environment for all Institute users.

The CS is, therefore, implementing the hardware infrastructure, the software services and the support necessary to enable all users to take full advantage of the methods to access information through internally and externally interconnected systems.

The service is currently run by 20 staff members involved in development, procurement and user/technical support.

The infrastructure operated by the Computing Service is composed of:

- 550 PCs installed on the entire EUI campus.
- It is possible for guest users to connect their own portable computer. The overall system is designed to accept several hundred additional guest users' PCs (typically laptop PCs). Consequently several security technologies are implemented on a large scale, such as pervasive antivirus and spyware check, automatic system updates (patches), encrypted communications, single-sign-on infrastructure, continuous network access control, firewall.
- 50 servers deliver all necessary services (listed in the next section) to the above-mentioned PCs. The more critical services are operated by servers organized in cluster (fault tolerant assembly).
- Premises internally cabled by a classic 100 Mbps TP LAN and externally interconnected via 155 Mbps Fibre optic backbone, 155 Mbps Optical (Laser) lines or 2 to 8 Mbps Leased Lines.
- Public areas are covered by wireless LAN.

- Servers run miscellaneous O.S. - Windows Server 2000, HP-UX, Solaris, Novell and Linux.
- The Internet connection is based on a 9 Mbps link. These are operated by the two different service providers in order to enhance the service availability.

The above structure supports 1700 registered users plus a variable number of guests.

The CS manages a number of computing laboratories, located at the Badia Fiesolana, Villa San Paolo and Villa Schifanoia. They are equipped with a network of Windows XP PCs installed with software for general use as well as for specialised research needs.

CD burners, scanners, and networked laser printers/ photocopiers are likewise available in these rooms. For specialised and large-scale computational applications, special servers are maintained, on which are installed a wide selection of mathematical and statistical programs.

Computing support is handled by local Site Offices, distributed over the different Institute buildings, and responsible for assistance to users, PC installations and troubleshooting, as well as management of all computing activities and facilities in their respective sites.

All EUI members are automatically issued a personal computing account that grants several services:

- Standard client software configuration including all major software packages.
- Fast Internet access.
- Electronic mail facilities on the basis of an MS-Exchange system (including access via WEB interface).
- Integrated anti-virus and anti spam controls.
- VPN (or dial-in) access to the EUI network from outside (worldwide).

- WI-FI in several campus areas.
- Availability of an Intranet/Extranet secured by DMZ
- Full availability of the groupware services both internally and externally via WEB based access.
- Single consistent Corporate Database.
- WEB site.
- Single sign-in.
- Video conferencing.
- Centralized security controls like virus control, SPAM control and automatic O.S. patch update.
- Data collection access (Library and external providers).
- Research specific software application (e.g. Mathematical modeling, symbolic editors, simulators, semantic modeling etc.).

<http://web.iue.it/CITS/>

Career Development

The EUI is establishing a network which allows researchers in their final year to benefit from internships in the public and private sector, and teaching in universities to prepare researchers for their future professional career.

The Historical Archives of the European Union

The Institute hosts the Historical archives of the European Union Institutions (from 1951 till 1976) according to the thirty years delay of access. This unique collection (4000 linear meters) located in Villa Il Poggiolo, is supplemented by the archives of the Organization for Economic Co-operation and Development, the European Space Agency, etc.

The personal records of important European statesmen such as Alcide De Gasperi and Paul-Henri Spaak, personalities such as Alexandre Marc, Altiero Spinelli, Commission's Presidents such as Walter Hallstein and Franco



Maria Malfatti or Commission's High Executives such as Max Kohnstamm, Emile Noël, Etienne Hirsch have also been deposited with the Archives.

Relevant material deposited by pro-European movements such as the European Movement, the European Federalists Union, the Council of European Municipalities and Regions, can also be consulted at Villa il Poggiolo.

Language courses

Given the multilingual nature of the EUI working environment, there is a clear need for a high level of a second EU language to promote effective communication and full participation in the activities of the Institute, as well as those of the wider international academic community. The courses offered by the Language Centre have been designed with these aims in mind. With courses designed for academic objectives (English for Academic Purposes), English in particular concentrates on the requirements of researchers, who must communicate appropriately at doctoral and post-doctoral level.

The main goals of the language courses are:

- To support researchers in writing their papers and theses (through academic writing courses at different levels and regular opportunities for correction in English and French);
- To support researchers in editing the final draft of their thesis (through the correction service in English and – where requested – in French, Italian or German);
- To promote the multilingual competence of researchers, professors and staff.

The Institute offers a variety of pre-sessional language courses catering for different specific needs in English, French, German, Italian and Spanish in September.

Courses in these languages (and, from October, also including Portuguese) are then continued in a less intensive way through the year, some of them preparing participants to sit official language certificates.

The Language Centre is staffed by qualified and experienced professional teachers, and the teaching methods and materials are modern and multimedial.

Courses are free for researchers and Jean Monnet Fellows only. Other language courses (e.g. Arabic, Dutch, Greek, Russian etc.) can also be organized on a fee-paying basis.

For more information, please see

<http://www.iue.it/LINGUE/>.

Housing Information Service

This service provides information about the Institute's own accommodation *for postgraduate research students*, which consists of 38 furnished flats in the village of Pian di Mugnone, about 2 km from the Badia Fiesolana.

The housing service also provides information on accommodation possibilities, temporary as well as permanent, on the private and commercial market in and around Florence. To that purpose it maintains a housing webpage: <http://www.iue.it/Housing> where it publishes offers and demands by EUI colleagues and where the EUI housing database (password-protected) can be consulted. The housing database contains offers that are usually furnished houses, flats and rooms.

For housing information, contact: housing.office@iue.it

“Since I left the EUI in 1997 I have been back every year, and usually several times. It is a marvellous place. For me it symbolizes some of the best Europe has to offer and it certainly was decisive for launching me into an academic career. And it has an excellent reputation in the American academia.”

Hubert ZIMMERMANN (HEC 1992)

DAAD Visiting Associate Professor, Department of Government, Cornell University

“A really intercultural, interdisciplinary, international adventure, where the day always seems too short to allow you to fully participate in and profit from all the exchanges, discussions, intellectual challenges that take place around you. A dense time which will mark your future career, with the way in which your eyes were opened to different logics, experiences and perspectives and with the professional and personal contacts that will accompany you even after leaving the Badia Fiesolana.”

Chiara ZILIOLI (LAW 1985)

Deputy General Counsel of the European Central Bank, Frankfurt